


April 2, 2019 • Talks on Tuesdays Webinar



We Are All In This Together:

Sharing Difficult Information
With Families In Early
Intervention
PART I

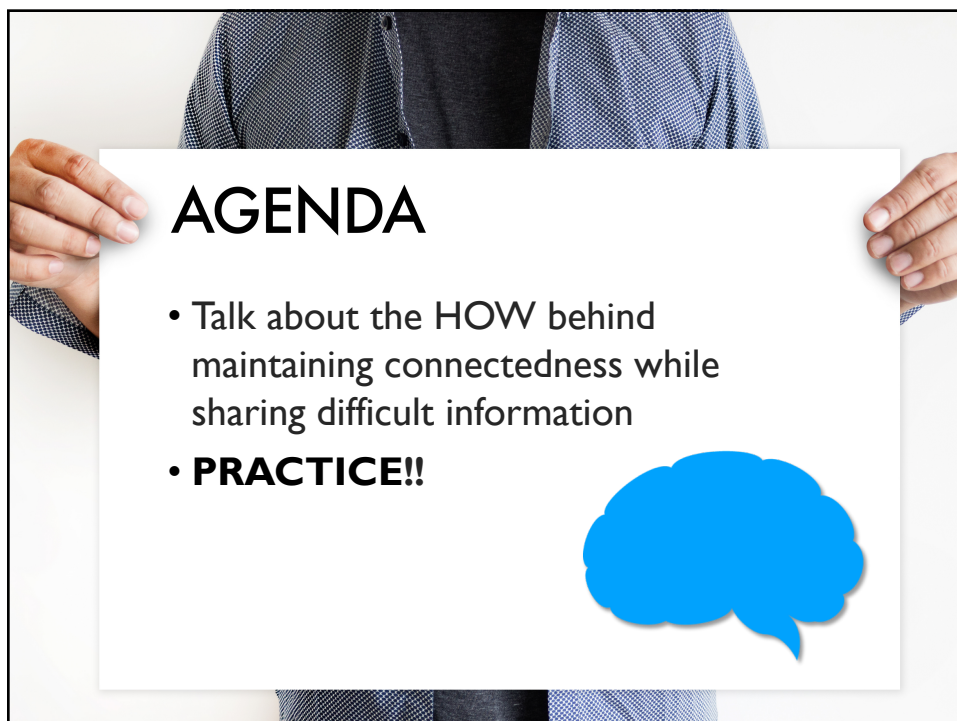
PRESENTED BY
Leah Davidson,
MS, IMH-E (II)



Meet the Presenter

Leah Davidson MS, IMH-E (II)

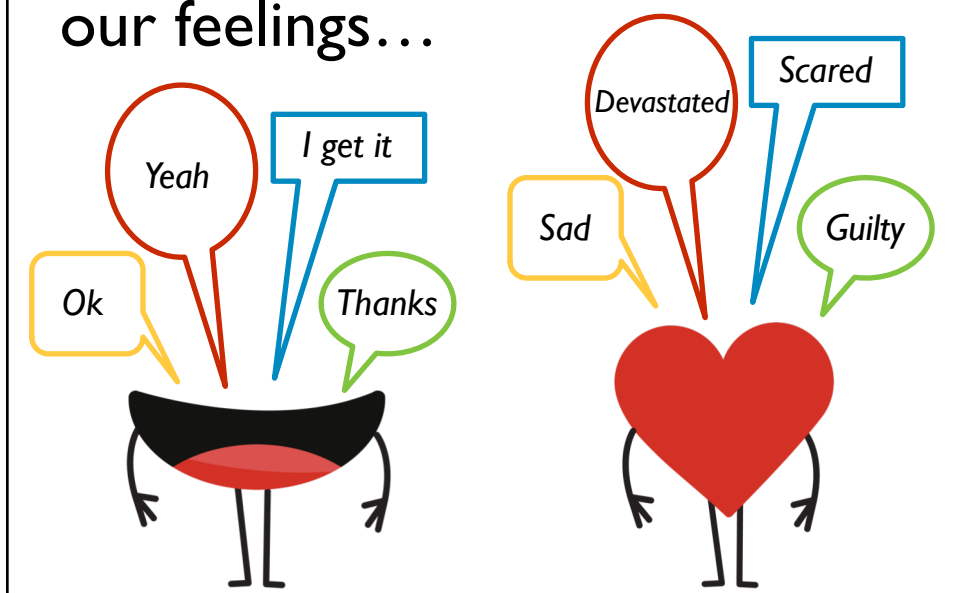
Local System Manager
Early Intervention Arlington



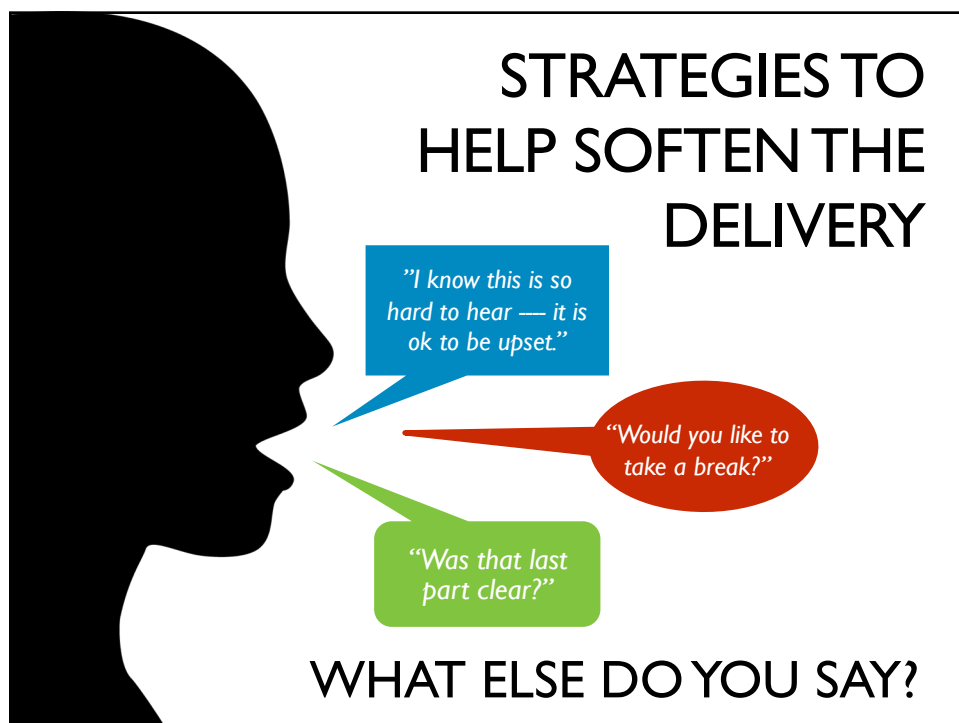
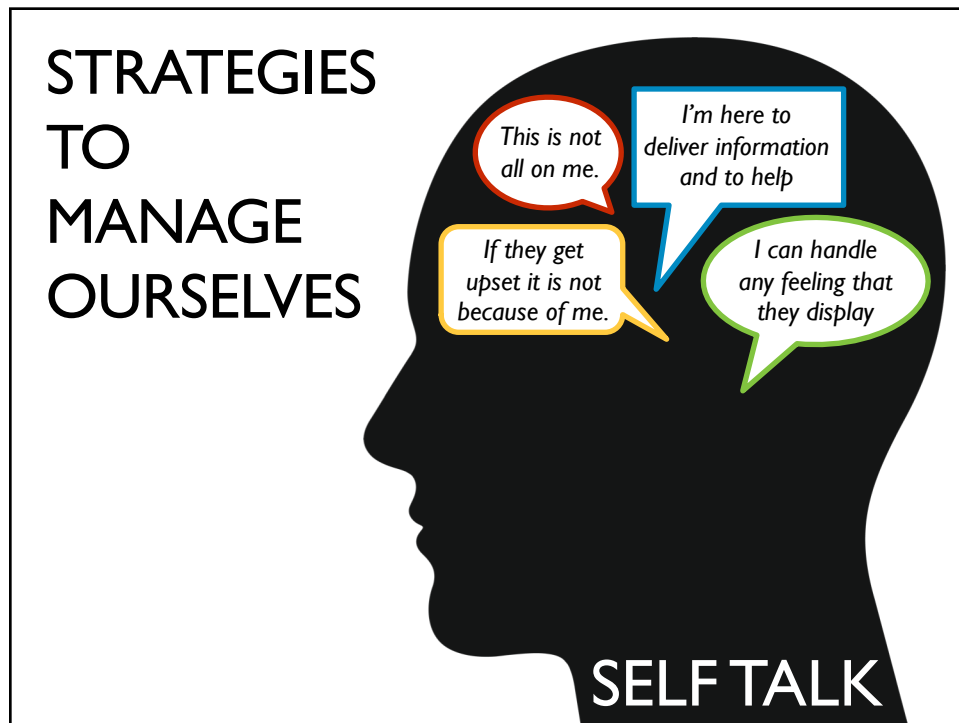
Our words don't always match our thoughts...



Our words don't always match our feelings...

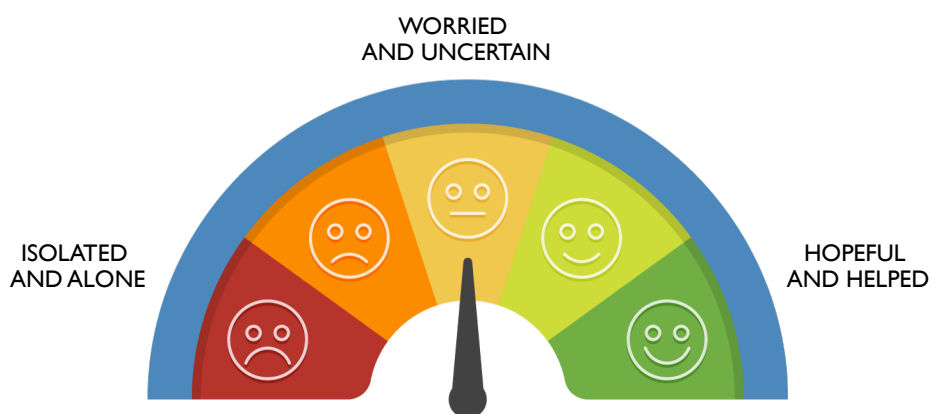








IMPACT VS. INTENT



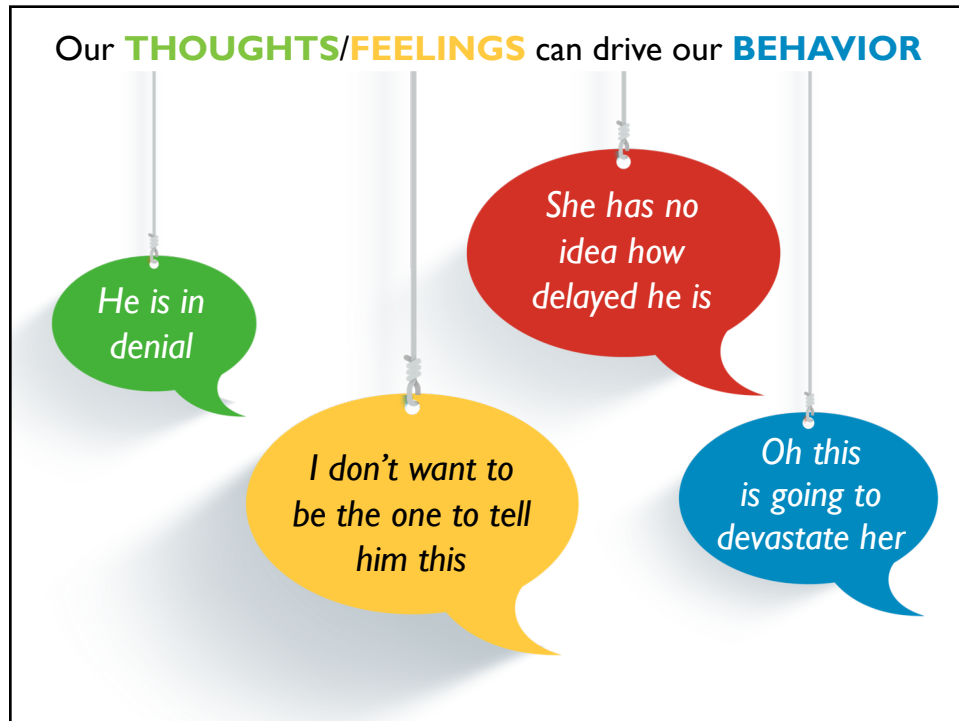
Type in chat any "go to" statements that help give them hope.

ALL FEELINGS ARE WELCOME



STAYING CONNECTED IN THE MIDST OF FEELINGS





EMPATHY – FEELING WITH

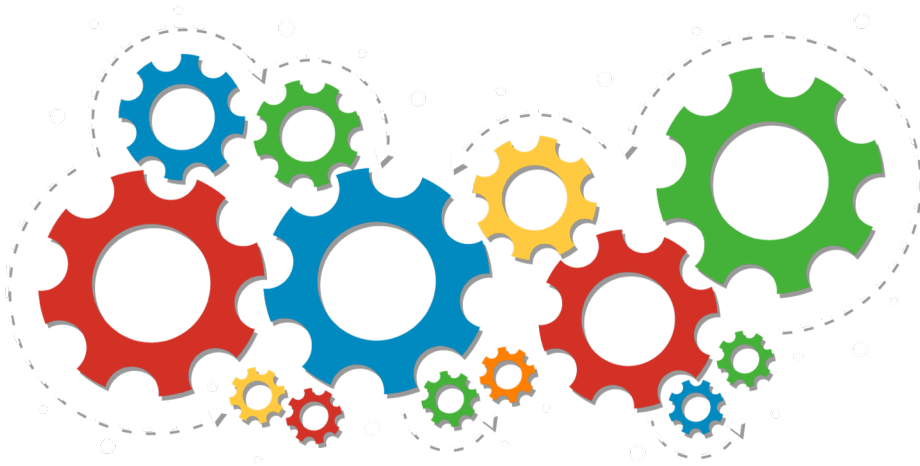


When
people are
not alone in
their difficult
feelings, the
world feels
safer and
less lonely.

WHY EMPATHY?



COLLABORATION – WORKING WITH



A TRUE PARTNERSHIP

YOU are the expert on:

- Overall 0-3 Child Development
- The specifics of **YOUR** discipline

PARENTS are the expert on:

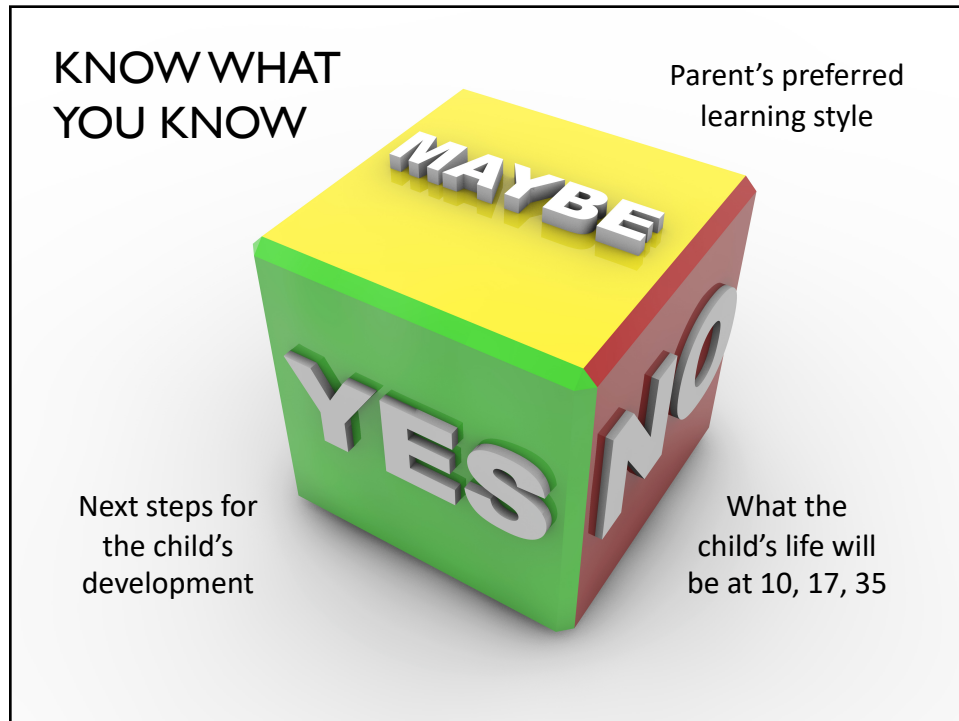
- The child as a **WHOLE**
- The life of the family

Thing about EI:

THEY ARE VALUED

This is always true,
but the unique **EQUALLY**





SKYLAR



What example do
YOU have when
you have either felt
like avoiding telling a
parent something
or blurting it out
so they could
know about it.


Share your
response with
us in chat.



QUESTIONS

CONTACT

Leah Davidson MS, IMH-E (II)
ldavidson@arlingtonva.us



Leah Davidson
LSM

Jessica Brickley
LCSW, Autism Clinic Team Facilitator

Casey Stultz
SC/Developmental Services Provider

Joshirlon Capehart
SC

Katie Webb
Parent

MAY TALKS ON TUESDAYS