

Preventing Challenging Behavior in the Home Setting

PRESENTED BY
Jaclyn D. Joseph,
PhD, BCBA



May 2, 2017 • TALKS ON TUESDAYS WEBINAR



AUDIO DETAILS:
1-866-842-5779
Enter Code: 463-661-9330

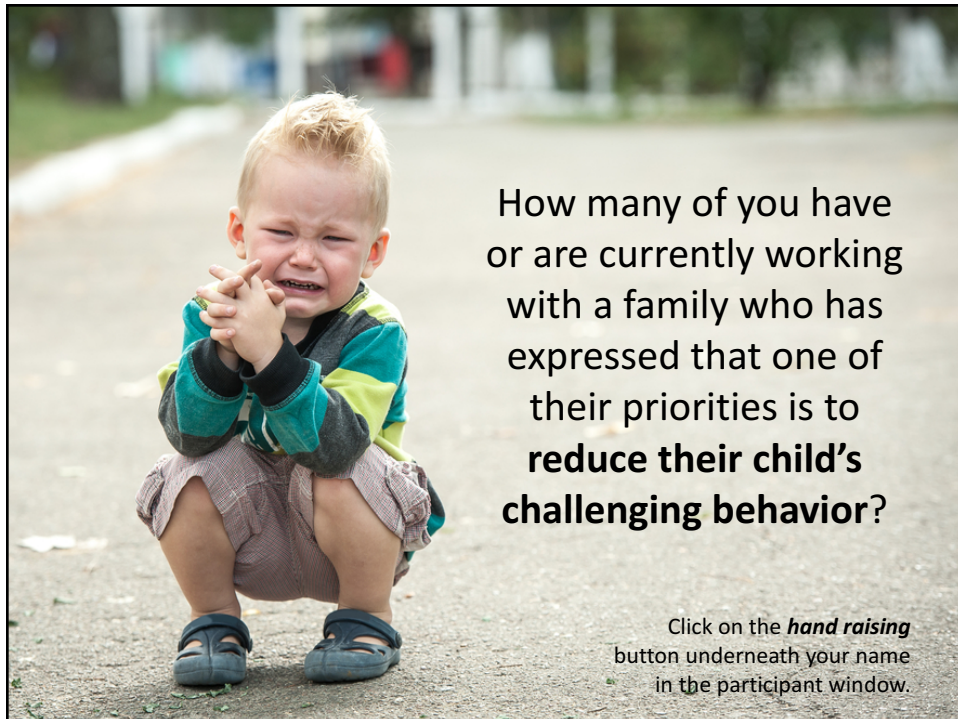
Today's Presenter



Jackie Joseph, PhD, BCBA
jaclyn.joseph@ucdenver.edu

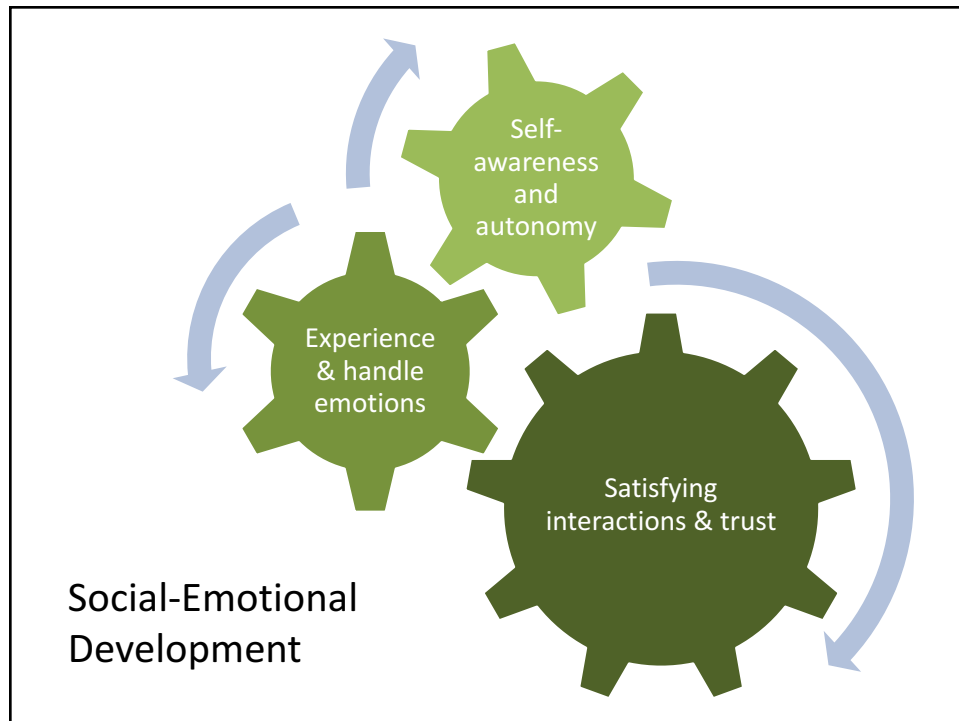
Questions We'll Answer Today




- What do we mean by social emotional development?
- What are challenging behaviors?
- Why do challenging behaviors occur?
- What parenting practices will prevent challenging behavior?
- What should we do if challenging behavior still occurs after implementing these parenting practices?



How many of you have or are currently working with a family who has expressed that one of their priorities is to **reduce their child's challenging behavior?**

Click on the *hand raising* button underneath your name in the participant window.



More likely to share toys	 INFANT
Plays by themselves or enjoys parallel play	 TODDLER
Expresses several clearly differentiated emotions	 PRESCHOOL
Shows awareness of others' feelings	

Use the **line tool** to connect the statement to the corresponding age.

What are challenging behaviors?



Any repeated pattern of behavior that interferes with optimal learning or engagement in prosocial interactions with peers and adults

(Smith & Fox, 2003)



What percentage of parents of children receiving early intervention services through IDEA Part C (birth to three-year-olds) reported that their child had serious social emotional issues?

- a. 2%
- b. 4%
- c. 10%
- d. over 30%

(Hebbeler, Spiker, Bailery, Scarborough, Malik, & Simeonsson, 2007)

Children with challenging behavior at a young age tend to grow out of it as they age.

TRUE

FALSE

Use the ***pointer tool*** from the vertical toolbar to make your selection.



Young children's challenging behavior can have long-term, adult consequences.

TRUE

FALSE





POLL

What percentage of preschoolers at risk due to poverty engage in challenging behavior?

- a. 8%
- b. 10%
- c. 15%
- d. 30%

(Qi & Kaiser, 2003)





three • na • ger

noun \ thre-naj-er\
: a 3-year-old who acts out,
pouts, complains,
and has the general attitude,
angst, and mood swings
of a teenager

Variety of reasons challenging behaviors occur:

- Antecedent events
- Child skill needs
- Reinforcing consequences

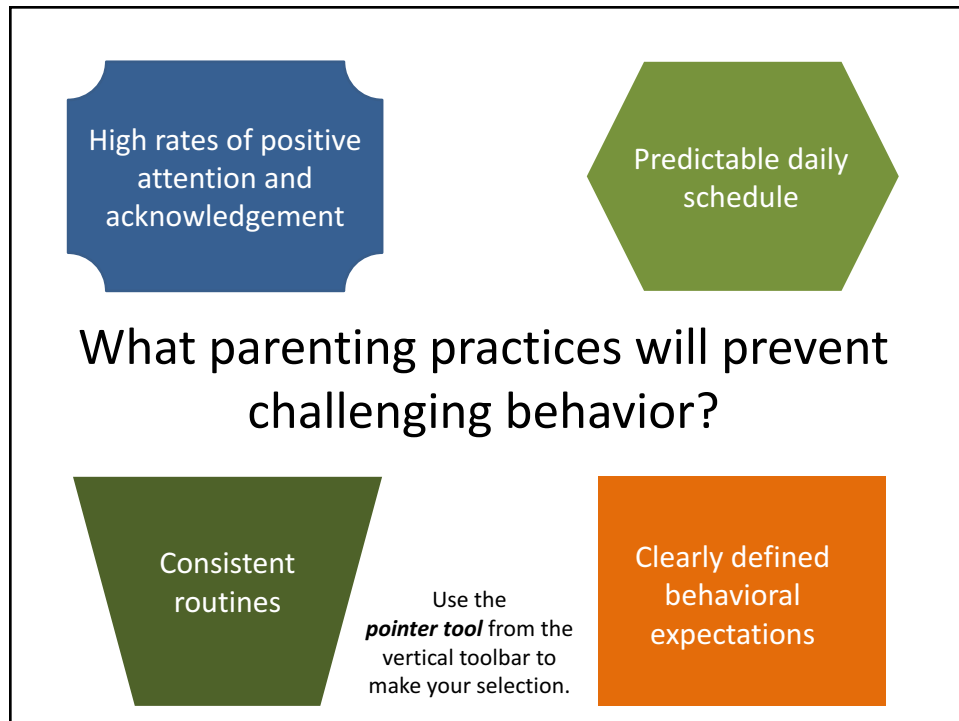


In your experience, what is the most common challenging behavior that families report experiencing in the home setting?



The best place to start is with
universal parenting practices
that are known to promote positive social-emotional
behaviors and to prevent challenging behaviors.





1 Provide High Rates of Positive Attention and Acknowledge Occasions in Which the Child is Behaving Appropriately

5:1 Rate of Positive Attention to Negative Attention

A photograph of a young child with dark hair, wearing a red and white checkered dress with a white lace collar. The child is giving a thumbs up gesture with their right hand. The background is plain white.

Labeled Praise and Special Attention for Particular Interactions

You know how to hold my hand to cross the street. Thank you!

I like how you're using nice, soft touches to pet the dog.

I love how you're keeping the ducky in the tub!

Your Turn! "Positive Opposites"



No standing on the chair.

2

Establish and Maintain a Predictable Daily Schedule

Schedule of Activities



SOURCE: <http://www.themilitarywifeandmom.com/printable-routine-cards-for-toddlers-preschoolers/>

Interruptions or Alterations to the Routine



3

Develop Consistent Routines within the Elements of the Daily Schedule

Regularly Occurring Activities
within Daily Routines

<http://www.mommy-miracles.com>



<http://bitzngiggles.com>

Routines and activities should help young children answer these four questions:

- ? What am I doing now?
- ? How do I know I'm making progress?
- ? How do I know when I'm finished?
- ? What comes next?

Share with us the most difficult routines of the day for families you support...

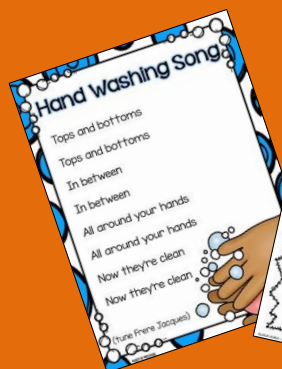
Use your **text tool** to type your answer on the whiteboard.

Regular Occurring Sequences

FIRST



THEN



<https://www.teacherspayteachers.com>

Think about this scenario....



Type your response in to
the *chat window*.

Warnings and Choices

1 Minute



3 Minutes



5 Minutes



10 Minutes



4

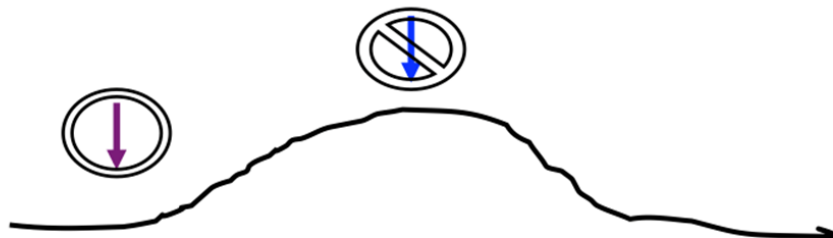
Clearly Define Behavioral Expectations and the Difference Between Desired Behavior and Undesired Behavior



**Explicitly
Teach
Behavioral
Expectations
for Family
Routine**

Teach Boundaries for Appropriate Behavior

Prepare in advance



**Following
Challenging
Behaviors with
Corrective
Feedback**



**Provide
Positive
Attention!**



Think about this scenario....

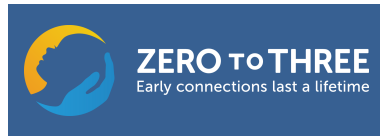
- *Positive Attention and Acknowledgement*
- *Predictable Daily Schedule*
- *Consistent Routines*
- *Clearly Defined Behavioral Expectations*

Type your response in to the *chat window*.

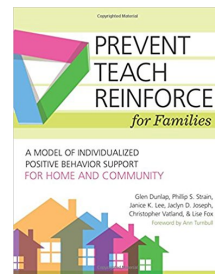
Think about this scenario....

Type your response in to the *chat window*.

What should we do if challenging behavior still occurs after implementing these parenting practices?



**Technical Assistance Center
on Social Emotional Intervention
for Young Children**



Contact Me



Jackie Joseph, PhD, BCBA

jaclyn.joseph@ucdenver.edu

THANK YOU!!!